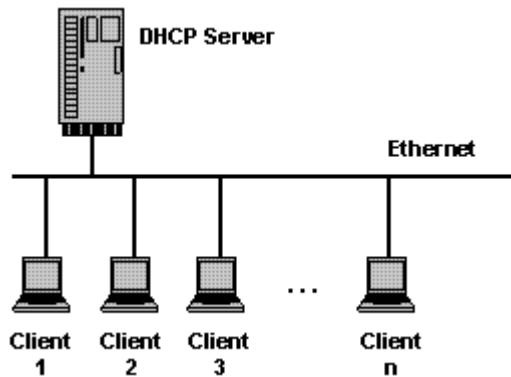


A DHCP Server assigns IP addresses to client computers. This is very often used in enterprise networks to reduce configuration efforts. All IP addresses of all computers are stored in a database that resides on a server machine.



Installing DHCP Server is very easy in win server 2003

First you need to go to Start->All Programs->Administrative Tools->Manage Your Server



Here you need to select Add or remove a role



Manage Your Server

Server: REFERENCE TEST

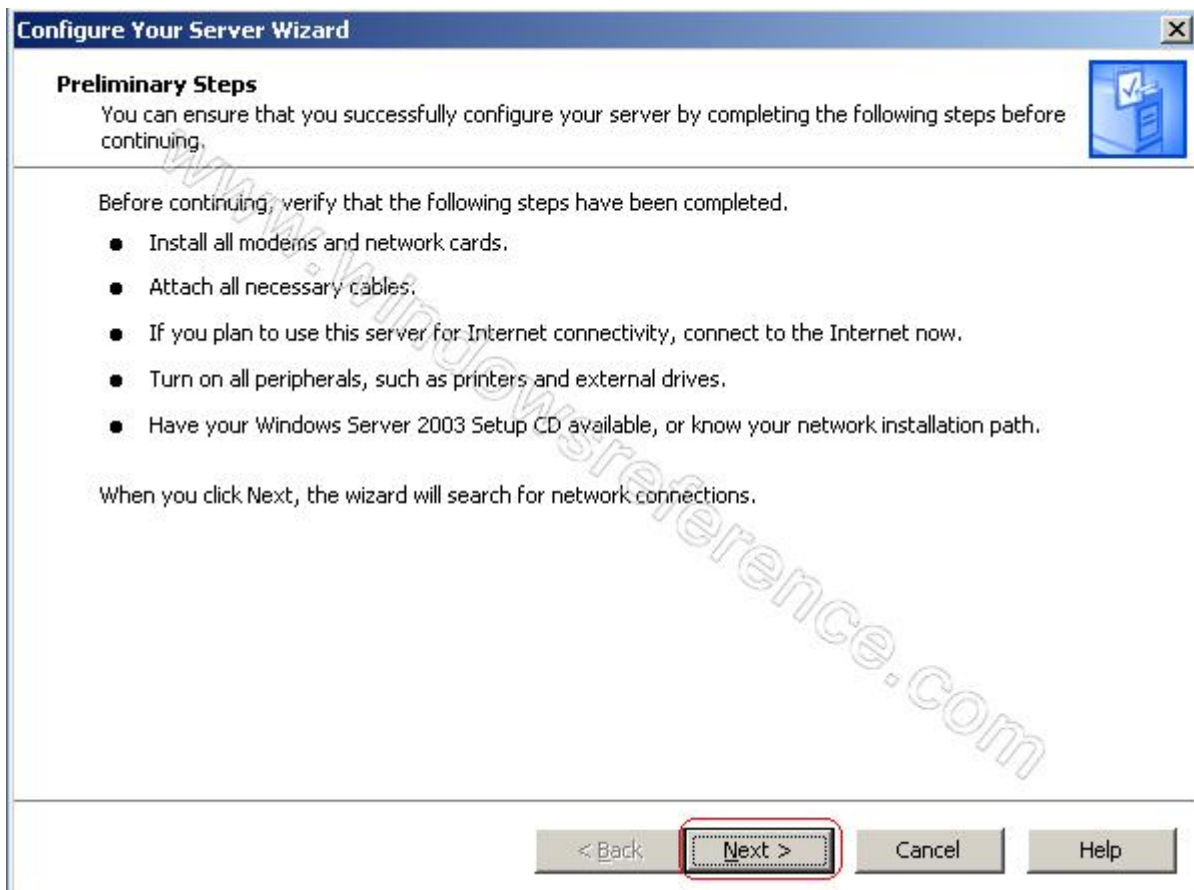
Managing Your Server Roles

Use the tools and information found here to add or remove roles and perform your daily administrative tasks.

- Add or remove a role
- Read about server roles
- Read about remote administration

Your server has been configured with the following roles:

Verify the following steps click on Next



Configure Your Server Wizard

Preliminary Steps

You can ensure that you successfully configure your server by completing the following steps before continuing.

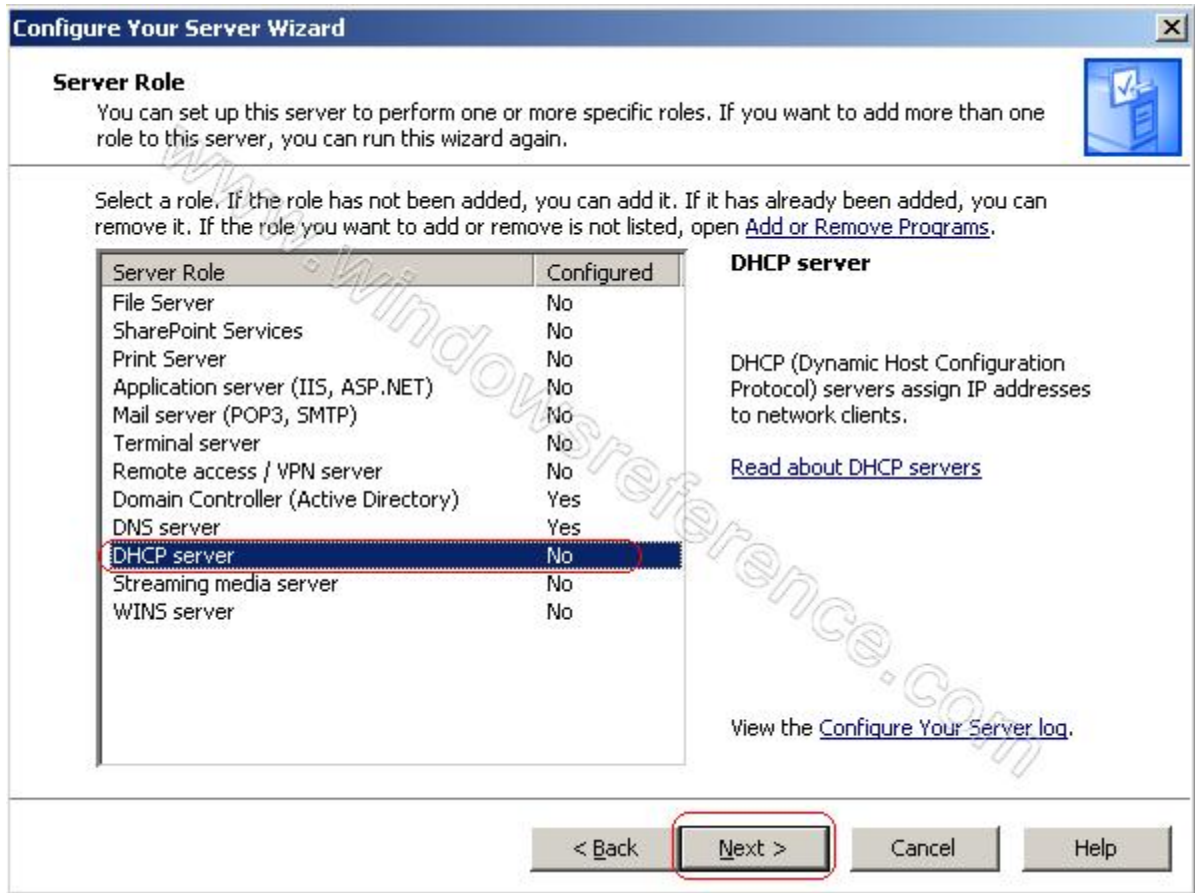
Before continuing, verify that the following steps have been completed.

- Install all modems and network cards.
- Attach all necessary cables.
- If you plan to use this server for Internet connectivity, connect to the Internet now.
- Turn on all peripherals, such as printers and external drives.
- Have your Windows Server 2003 Setup CD available, or know your network installation path.

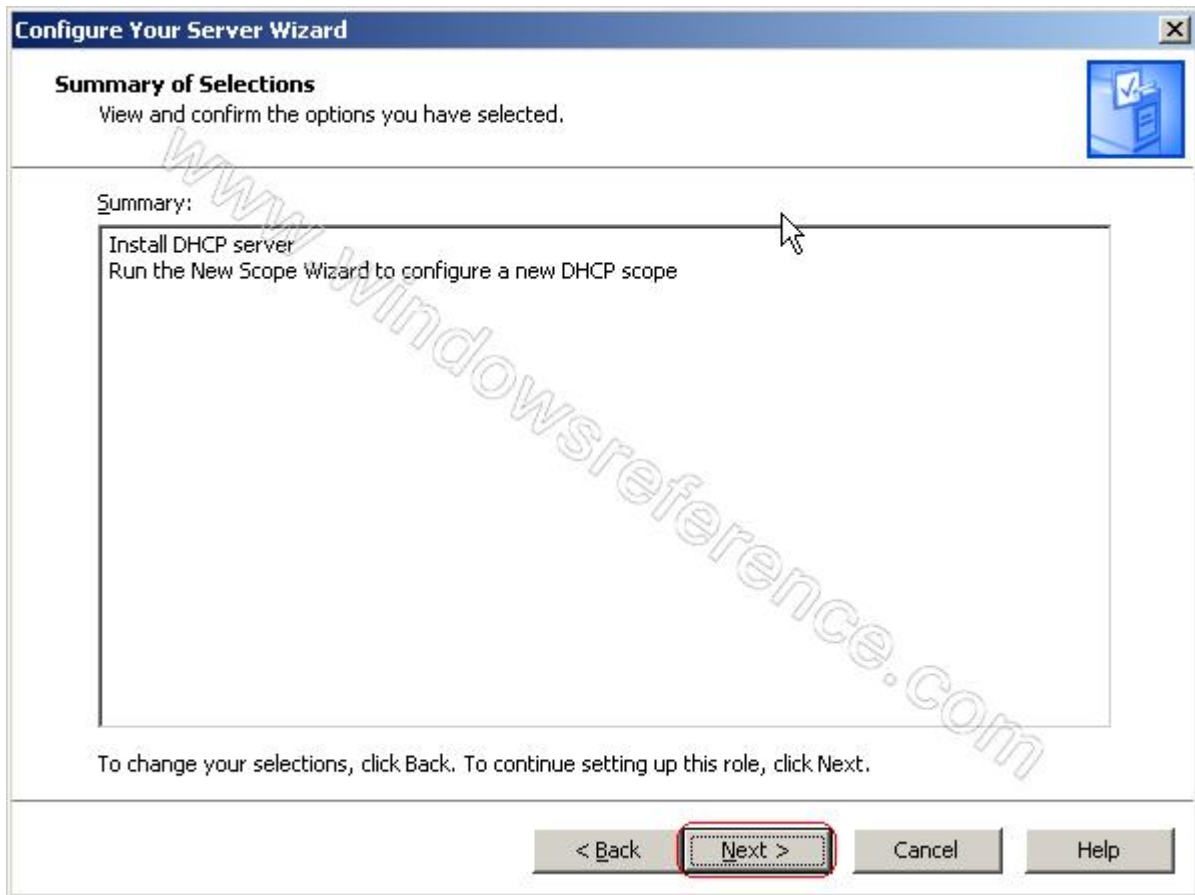
When you click Next, the wizard will search for network connections.

< Back Next > Cancel Help

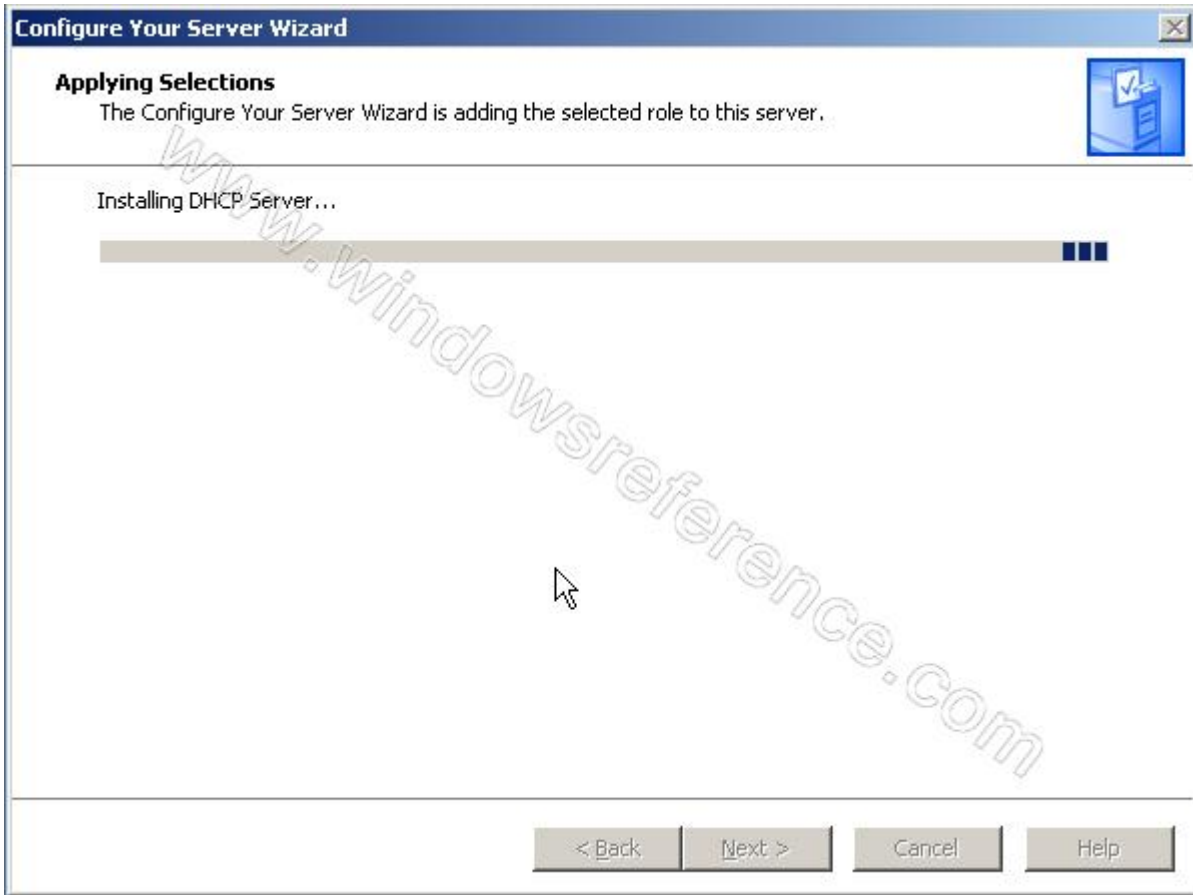
Select Server Role as DHCP Server option click on Next



Summary selection click on Next



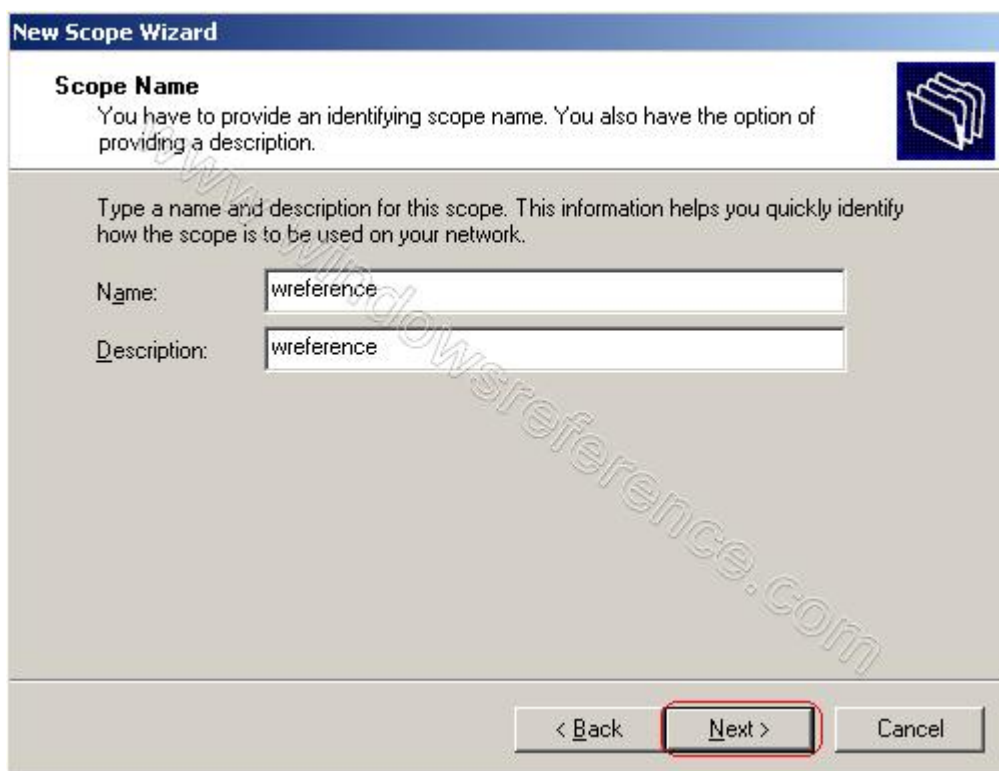
Installing DHCP Server in progress



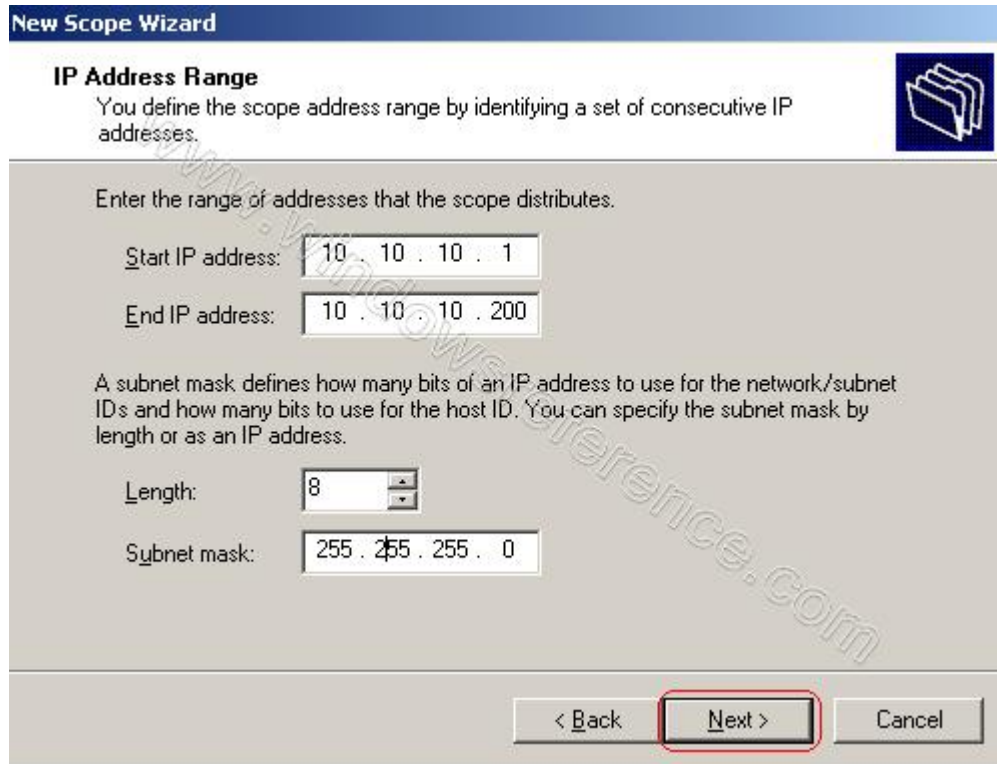
Now this will prompt new scope welcome screen click next



A scope is a collection of IP addresses for computers on a subnet that use DHCP. enter the name and description of your scope click next

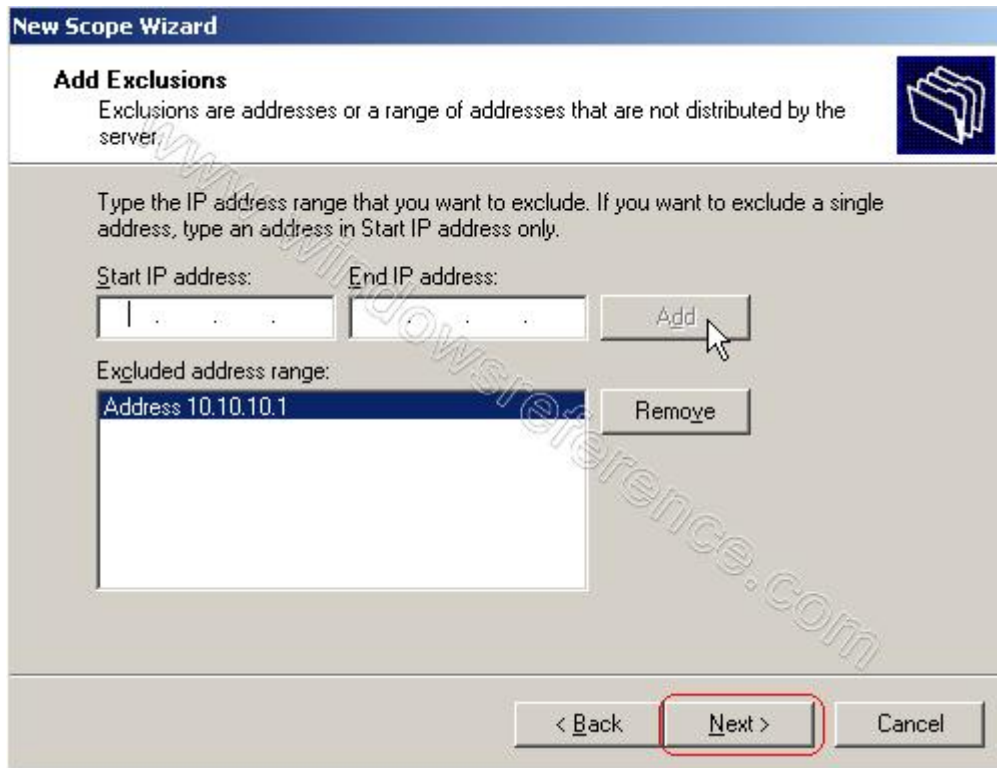


Now you need to define the range of addresses that the scope will distribute across the network, the subnet mask for the IP address. Enter the appropriate details and click next.

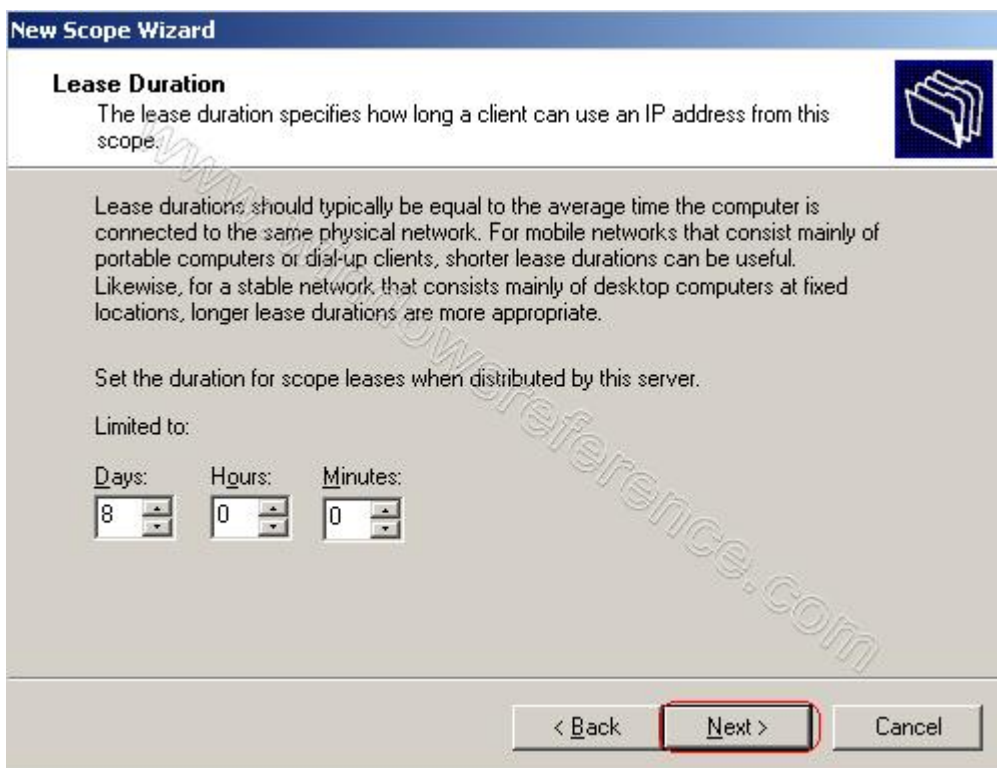


The screenshot shows the 'New Scope Wizard' dialog box, specifically the 'IP Address Range' step. The title bar reads 'New Scope Wizard'. Below the title bar, the section is titled 'IP Address Range' with a folder icon to the right. The text below the title says: 'You define the scope address range by identifying a set of consecutive IP addresses.' Below this, there is a prompt: 'Enter the range of addresses that the scope distributes.' There are two input fields: 'Start IP address:' with the value '10 . 10 . 10 . 1' and 'End IP address:' with the value '10 . 10 . 10 . 200'. Below these is another instruction: 'A subnet mask defines how many bits of an IP address to use for the network/subnet IDs and how many bits to use for the host ID. You can specify the subnet mask by length or as an IP address.' There are two input fields for the subnet mask: 'Length:' with a dropdown menu showing '8' and 'Subnet mask:' with the value '255 . 255 . 255 . 0'. At the bottom of the dialog, there are three buttons: '< Back', 'Next >', and 'Cancel'. The 'Next >' button is highlighted with a red rectangle.

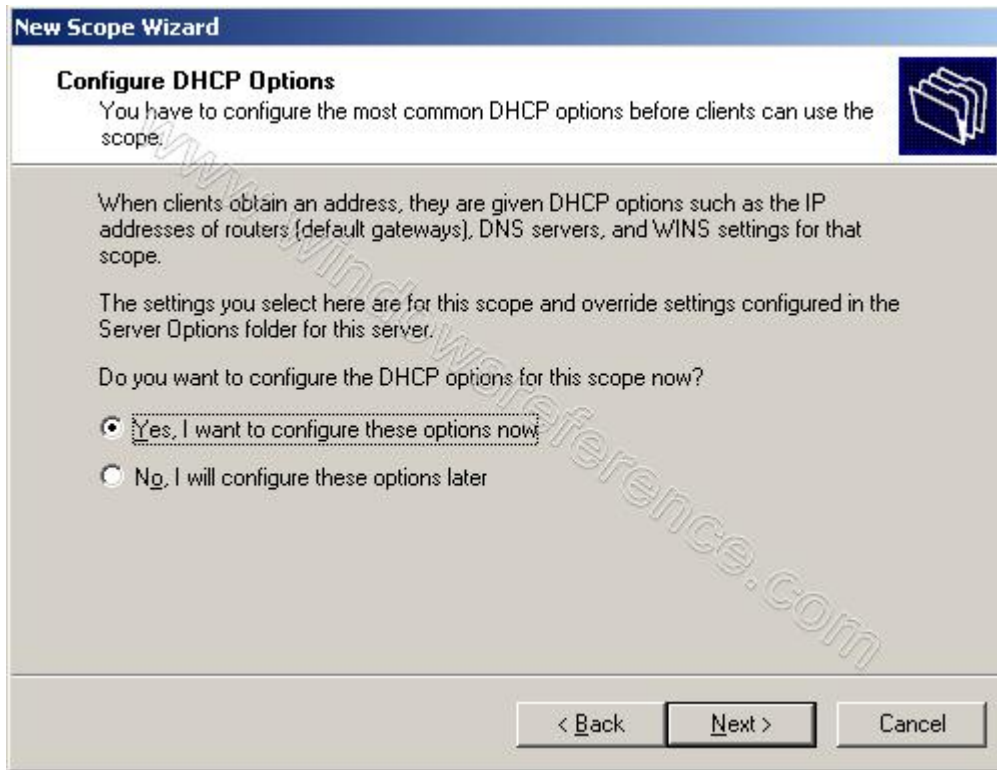
Enter the IP address range that you want to exclude and click on next



Select lease duration how long a client can use an IP address assigned to it from this scope. It is recommended to add longer leases for a fixed network (in the office for example) and shorter leases for remote connections or laptop computers and click next



You are given a choice of whether or not you wish to configure the DHCP options for the scope now or later. You can select Yes, I want to... radio button and click next



Enter the router, or gateway, IP address click next. The client computers will then know which router to use and click next

If you have WINS setup then here is where to enter the IP Address of the WINS server. You can just input the server name into the appropriate box and press Resolve” to allow it to find the IP address itself click next

New Scope Wizard

WINS Servers
Computers running Windows can use WINS servers to convert NetBIOS computer names to IP addresses.

Entering server IP addresses here enables Windows clients to query WINS before they use broadcasts to register and resolve NetBIOS names.

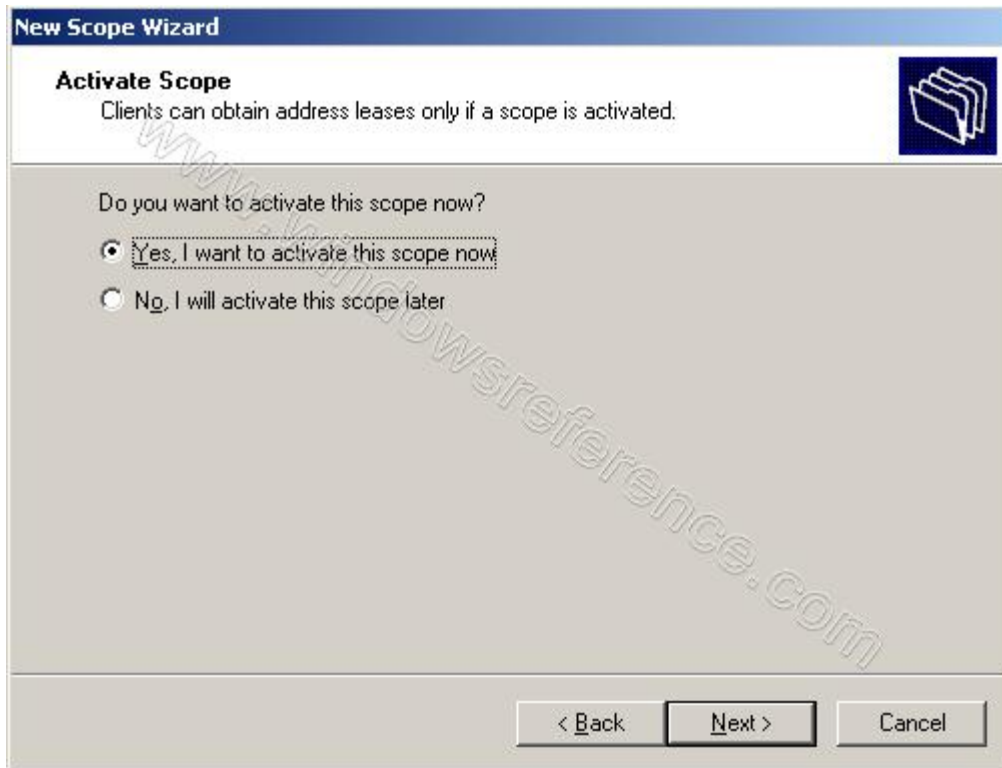
Server name:

IP address:

To change this behavior for Windows DHCP clients modify option 046, WINS/NBT Node Type, in Scope Options.

< Back Next > Cancel

Now you need to activate this scope now and click next



DHCP Server new scope installation was finished and click finish



Now your server is now a DHCP server message and click finish

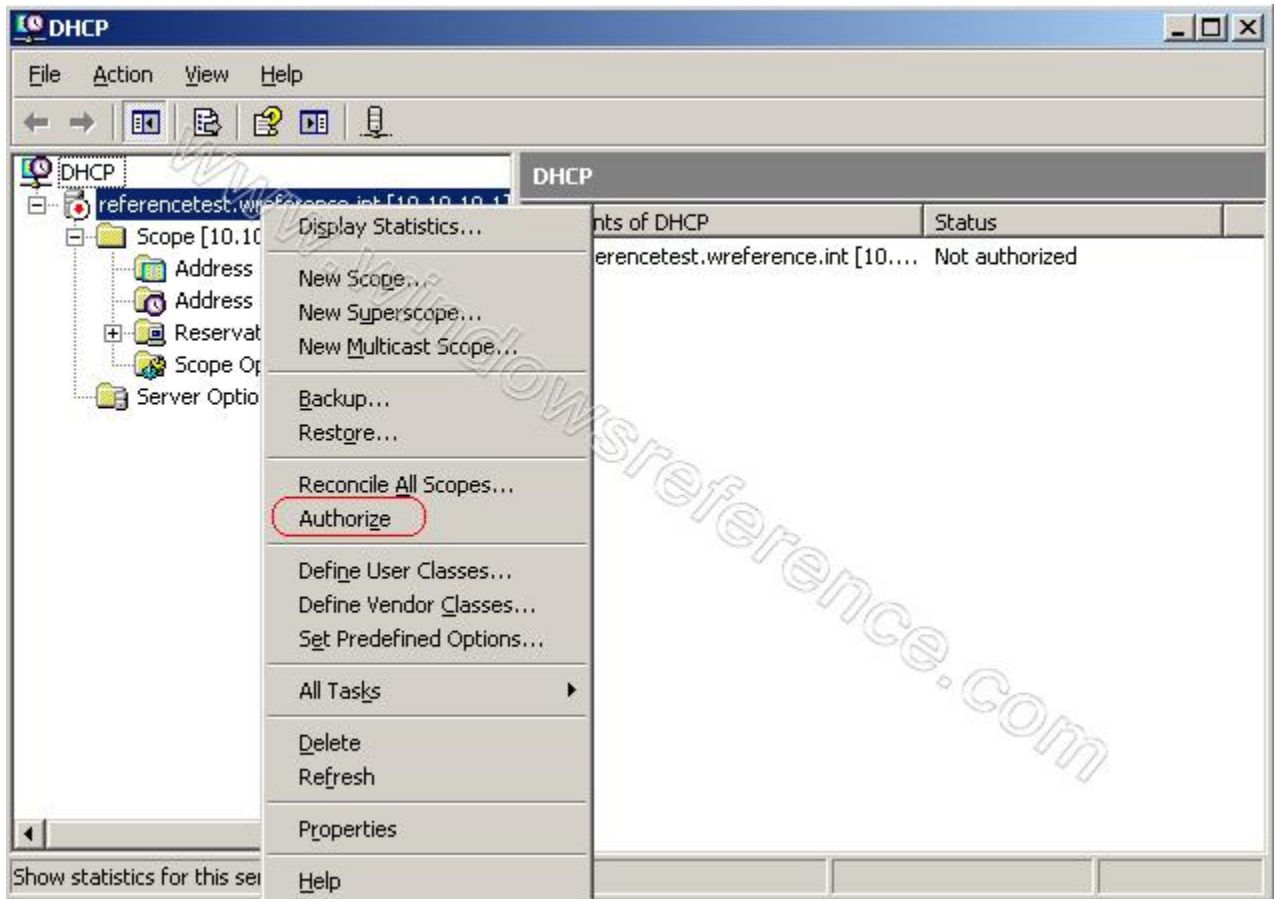


Configuring DHCP

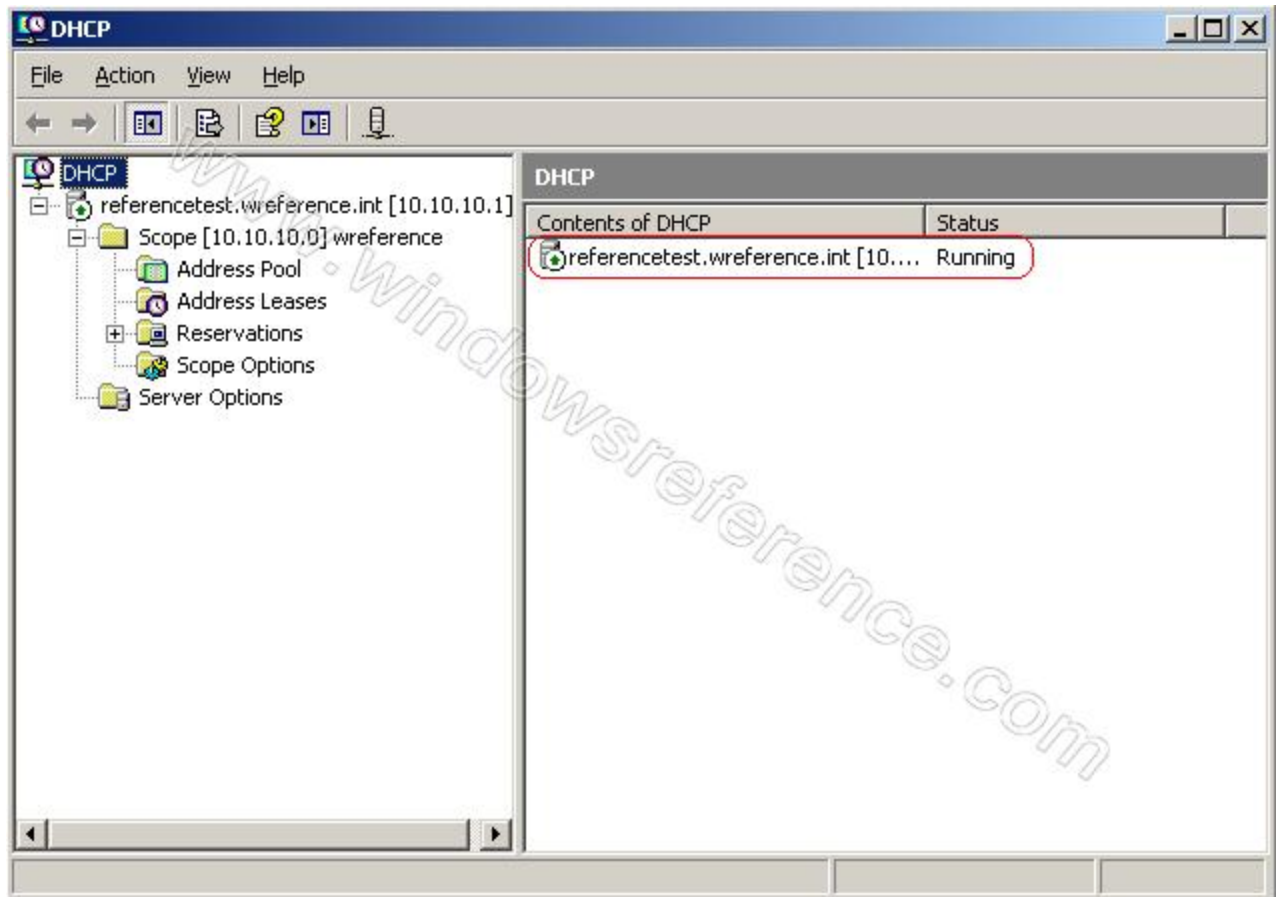
Now you need to go to Start—>Administrative Tools—>DHCP



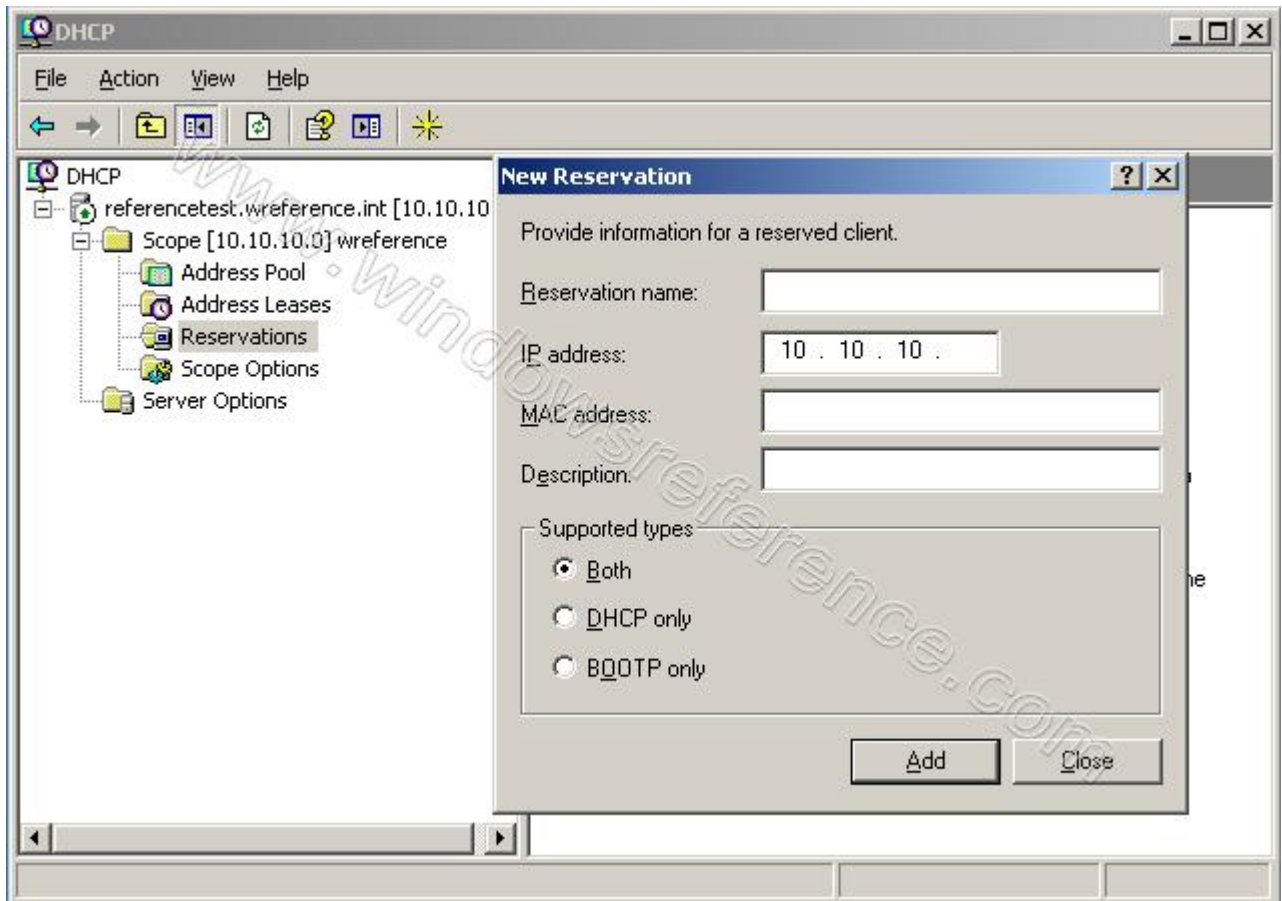
Right Click on your server click on Authorize your DHCP Server



Authorization completed now your DHCP server is up and running



DHCP servers permit you to reserve an IP address for a client. This means that the specific network client will have the same IP for as long as you wanted it to. To do this you will have to know the physical address (MAC) of each network card. Enter the reservation name, desired IP address, MAC address and description - choose whether you want to support DHCP or BOOTP and press add. The new reservation will be added to the list.



That's it it is very easy to configure DHCP server in win server 2003 now you can configure your windows client pc to check your dhcp server is working or not.

If you want to install and configure win server 2003 domain controller with DNS setup check [here](#)



Random Posts

- [How to disable Internet Explorer Enhanced Security Configuration \(IE ESC\) in Windows Server 2008/2003](#)
 - [RegAlyzer - A tool to view and edit the registry in Vista/XP](#)
 - [Howto Enable Audio Mapping for Remote Desktop/Terminal Services in win server 2003](#)
 - [TrayEverything - Minimizes any application to the Windows system tray](#)
 - [Fix for application can not run in Win32 mode Error](#)
 - [Vista Drive Icons for Windows XP/2000/NT/98/95](#)
-

Did you enjoy this post? Why not [leave a comment below](#) and continue the conversation, or [subscribe to my feed](#) and get articles like this delivered automatically each day to your feed reader.

Tags: [create new scope dhcp server win server 2003](#), [dhcp server configuration](#), [dhcp server setup win server 2003](#), [dhcp tutorials win server 2003](#), [step by step guide how to setup win server 2003](#)

Topics: [Windows-Server-2003](#)